

## **Iceland in figures 2003–2004**

Volume 9

Published by  
Statistics Iceland  
December 2003

ISBN 9979-770-22-8  
ISSN 1025-6903

Edited by Sigurborg Steingrimsdóttir  
Svava Guðjónsdóttir

Printed and bound by Gutenberg ehf.  
Paper: Kymexcode 90 gr.  
Font: Times New Roman 7 pt on 8 pt

Layout: Statistics Iceland

Copies: 1,000  
Price: \$ 4

Sale and subscription: Statistics Iceland  
Telephone : 528 1100  
Fax: 528 1098  
E-mail: [information@statice.is](mailto:information@statice.is)

Cover photograph: Ímynd, Guðmundur Ingólfsson  
Fagraskógafjall

Please quote the source  
© **Statistics Iceland**

Statistics Iceland  
Borgartúni 21a  
150 Reykjavík

Telephone: 528 1000  
Fax: 528 1098

E-mail: [information@statice.is](mailto:information@statice.is)

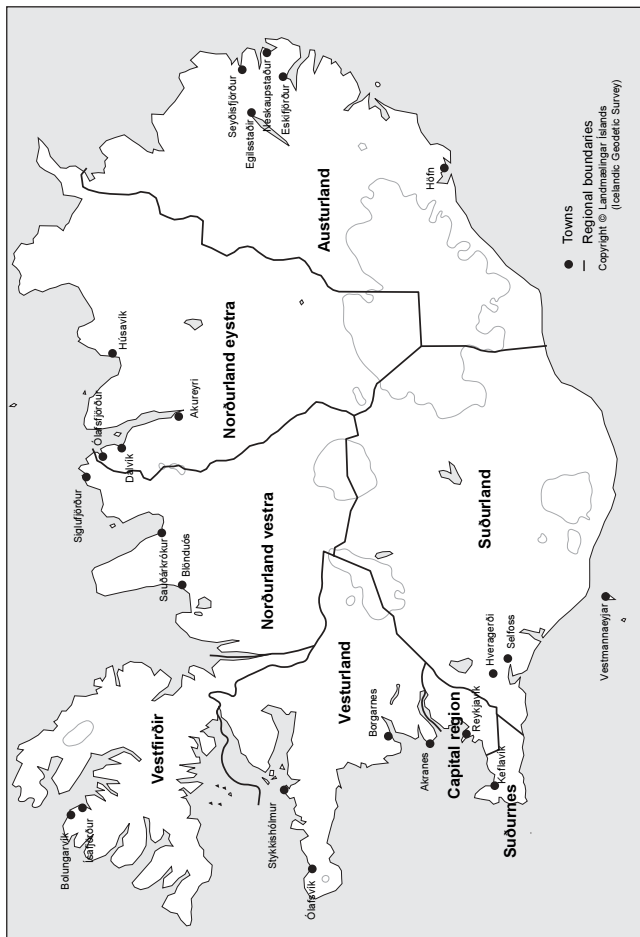
Web site: [www.statice.is](http://www.statice.is)

## Contents

Map of Iceland .....	2
Geography and environment .....	3
Population .....	4
Labour market .....	8
Agriculture .....	10
Fishing and fish processing .....	11
Manufacturing and construction .....	13
Energy .....	14
Tourism .....	15
Transport and communications .....	17
Prices and income .....	18
Consumption .....	19
National accounts .....	20
External trade .....	22
Public finance .....	24
Money and credit .....	25
Health and social affairs .....	27
Education and culture .....	28
Elections .....	30
EEA .....	31

## Symbols used in this publication

“	sign of repetition
—	nil
0	less than half of the unit used
·	category not applicable
...	not available
*	preliminary or estimated data
,	thousand separator
.	decimal separator
ISK	Icelandic krónur



## Iceland 2003

Population 31 December 2002: 288,471

Religion: State Lutheran Church: 86.5%

GDP per capita 2001 USD: 29,619

Municipalities 31 Dec. 2001: 105

Area of Iceland: 103,000 km<sup>2</sup>

Vegetation: 23,805 km<sup>2</sup>

Lakes: 2,757 km<sup>2</sup>

Glaciers: 11,922 km<sup>2</sup>

Wasteland: 64,538 km<sup>2</sup>

Population per km<sup>2</sup>: 2.8

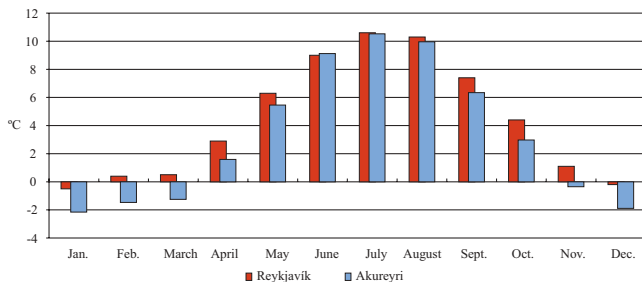
Coast line: 4,970 km

Sea area within fishing limits, km<sup>2</sup>: 758,000 km<sup>2</sup>

## Temperature and precipitation

	Reykjavik			Akureyri		
	Year	January	July	Year	January	July
Temperature (°C)						
Mean 2002	5.4	1.4	10.6	4.2	-0.5	10.9
Mean 1961–1990	4.3	-0.5	10.6	3.2	-2.2	10.5
Precipitation (mm)						
2002	916	117	45	590	100	33
Mean 1961–1990	799	76	52	490	55	33

## Mean temperature in Reykjavik and Akureyri 1961–1990



## Population

### Population and population projection

	Total	Males	Females
<b>Censuses</b>			
1703	50,358	22,867	27,491
1769	46,201	21,129	25,072
1801	47,240	21,550	25,690
1850	59,157	28,234	30,923
1901	78,470	37,583	40,887
1950	143,973	72,249	71,724
<b>National Register of Persons, 1 December</b>			
1960	177,292	89,578	87,714
1970	204,578	103,441	101,137
1980	229,187	115,529	113,658
1985	242,089	121,672	120,417
1990	255,708	128,317	127,391
1994	266,783	133,781	133,002
1995	267,806	134,222	133,584
1996	269,727	135,176	134,551
1997	272,069	136,284	135,785
1998	275,264	137,874	137,390
1999	278,717	139,518	139,199
<b>National Register of Persons, 31 December</b>			
2000	283,361	141,870	141,491
2001	286,575	143,450	143,125
2002	288,471	144,287	144,184
<b>Population projection, 1 January</b>			
2010	304,711	152,323	152,388
2020	325,690	162,663	163,027
2030	342,220	170,485	171,735
2040	351,188	174,409	176,779

### Population by sex and age

	Total	%	Males	Females
<b>31 December</b>				
Total	288,471	100.0	144,287	144,184
0–14 years	66,139	22.9	33,768	32,371
15–64 years	188,541	65.4	95,295	93,246
65 years and over	33,791	11.7	15,224	18,567

## Population

### Population changes

	Averages		2002
	1991–1995	1996–2000	
Live births	4,497	4,215	4,049
Deaths	1,782	1,853	1,821
Infant deaths (under 1 year)	22	15	9
Births in excess of deaths	2,716	2,361	2,228
Immigration	3,038	4,441	4,215
Emigration	3,363	3,773	4,490
Net immigration	-326	668	-275
Population increase	2,418	3,081	1,896
Marriages	1,249	1,539	1,619
Marriages dissolved	1,198	1,201	1,228
Death of spouse	683	691	704
Divorce	515	509	524
Registered partnerships	.	14	9
Per 1,000 population			
Population increase	9.2	11.2	6.6
Births in excess of deaths	10.3	8.6	7.7
Net immigration	-1.2	2.4	-1.0
Marriages	4.7	5.6	5.6
Marriages dissolved	4.6	4.4	4.3
Divorce	2.0	1.9	1.8
Live births	17.1	15.4	14.1
Deaths	6.8	6.8	6.3
Per 1,000 live births			
Infant deaths (under 1 year)	4.8	3.5	2.2
Fertility			
Total fertility rate	2.169	2.055	1.932

### Average expected lifetime

	At birth	15 years	50 year	80 year
1921–1930				
Males	56.2	47.6	23.0	6.2
Females	61.0	52.4	25.9	7.2
2001–2002				
Males	78.4	63.8	30.4	7.7
Females	82.6	68.0	34.0	9.2

## Population

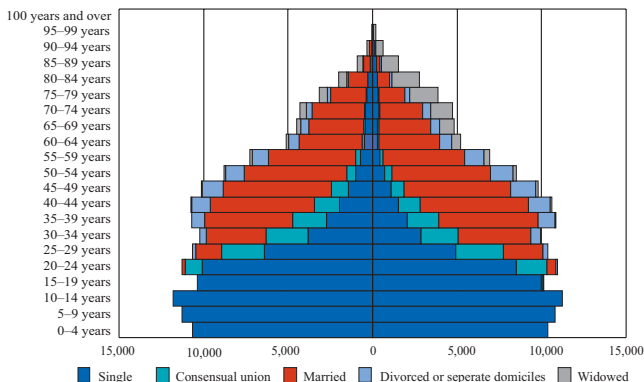
### Population by region

1 December	1910	1950	2002 <sup>1</sup>
Whole country	85,183	143,973	288,471
Capital region	15,006	65,555	179,992
Reykjavík	11,600	56,251	112,554
Kópavogur	...	1,647	25,016
Hafnarfjörður	1,547	5,087	20,720
Suðurnes	2,589	5,093	16,802
Vesturland	10,268	9,975	14,516
Vestfirðir	13,386	11,166	7,915
Norðurland vestra	9,012	10,264	9,219
Norðurland eystra	11,959	18,368	26,780
Akureyri	2,239	7,711	15,867
Austurland	9,713	9,705	11,749
Suðurland	13,250	13,847	21,498
Localities with 200 inhabitants or over	28,930	108,739	267,041
Minor localities and rural areas	56,253	35,234	21,430

See map p. 2.

<sup>1</sup> 31 December.

### Population 31 December 2002 by sex and age



## Population

### Population by citizenship

1 December	1980	1990	2002 <sup>1</sup>
Population, total	228,785	255,855	288,471
Icelanders	225,545	251,043	278,250
Other nationalities	3,240	4,812	10,221
Nordic	1,360	1,578	1,626
Other European <sup>2</sup>	886	1,698	5,542
American	731	861	908
African	38	125	300
Asian	114	404	1,756
Oceanian	104	144	55
Stateless	–	–	32
Unspecified	7	2	2

<sup>1</sup> 31 December.

<sup>2</sup> Thereof 1,803 from EU 2002.

### Deaths by main cause of death

2000	Total	Per 100,000 population
Deaths, total	1,828	650.2
Neoplasms	500	177.8
Diseases of the nervous system and the sense organs	88	31.3
Diseases of the circulatory system	717	255.0
Diseases of the respiratory system	170	60.5
Diseases of the digestive system	51	18.1
External causes of injury and poisoning	133	47.3
Other	169	60.2

### Deaths by sex and age

2002	Total	Males	Females
Deaths, total	1,821	935	886
In 1st year	9	7	2
1–44 years	106	58	48
45–64 years	242	145	97
65 years and over	1,464	725	739
Deaths per 1,000 population			
Deaths, total	6.3	6.5	6.2
In 1st year per 1,000 live births	2.2	3.4	1.0

## Labour force participation and unemployment

2002	Labour force	Participation rate, %	Unemployment rate, %
Total	162,000	82.8	3.3
16–24 years	25,900	71.0	7.2
25–54 years	108,400	92.5	2.7
55–74 years	27,700	66.0	1,9*
Males total	86,000	87.3	3.6
16–24 years	13,500	72.7	9.7
25–54 years	57,300	96.6	2.5
55–74 years	15,200	73.6	2,2*
Females total	76,000	78.2	2.9
16–24 years	12,400	69.2	4,4*
25–54 years	51,100	88.3	2.9
55–74 years	12,500	58.6	1,5*

\* Relative standard error over 20%.

## Employed persons by industry

2002	Total	Males	Females
Employed persons, total	156,700	83,000	73,800
% of total			
Agriculture	7.3	10.6	3.5
Agriculture	3.9	4.8	2.8
Fishing	3.4	5.8	0,7*
Industry	23.1	33.5	11.3
Fish processing	4.1	3.9	4.3
Manuf. except fish processing	10.2	14.4	5.5
Electricity & water supply	0.9	1.2	0,7*
Construction	7.8	14.0	0,9*
Services	69.7	55.9	85.2
Wholesale, retail trade, repairs	13.6	13.5	13.8
Hotels, restaurants	3.5	3.2	3.8
Transport, communication	6.2	7.4	4.9
Financial intermediation	3.9	2.5	5.5
Real estate & business activities	8.5	9.2	7.8
Public administration	5.0	5.0	4.9
Education	8.1	4.4	12.2
Health services, social work	13.8	4.1	24.6
Other services and n.s.	7.1	6.7	7.6

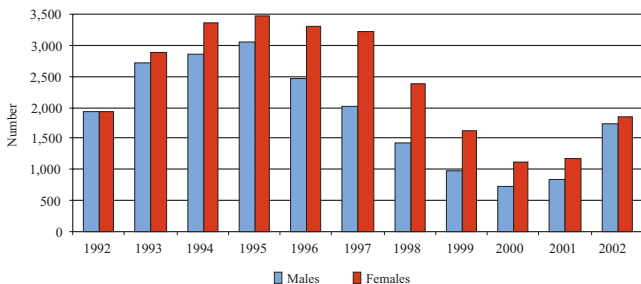
\* Relative standard error over 20%.

## Labour market

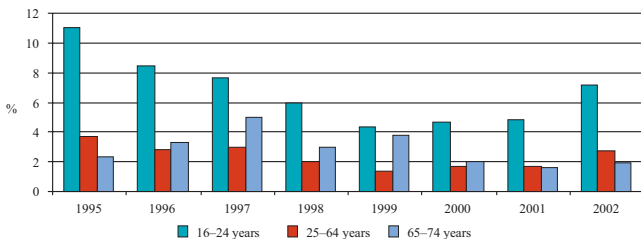
### Average hours of work per week

	1991	1995	2002
Employed total	43.8	42.9	43.0
Males	51.3	50.0	48.8
Females	34.5	34.5	36.3
Full-time employed	51.2	50.2	49.8
Males	53.9	53.3	52.4
Females	45.4	44.0	45.2

### Registered unemployment by sex 1992–2002



### Unemployment by age 1995–2002



## Production of field crops

	1995	2000	2002
Total hay yield, m <sup>3</sup>	2,503,564	2,363,342	2,175,427
Potatoes, tonnes	7,324	9,843	8,800
Turnips, tonnes	328	795	...
Cereal grains, tonnes	485	3,041	...
Tomatoes, tonnes	749	931	948
Cucumber, tonnes	606	831	...

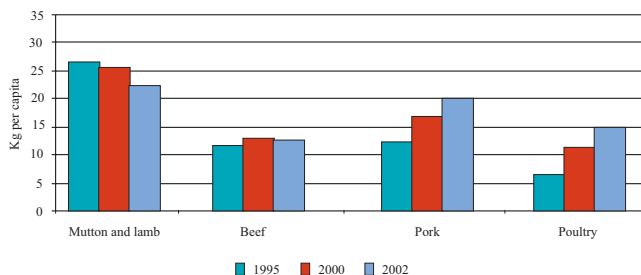
## Livestock

	1995	2000	2002
Cattle	73,199	72,135	67,225
Sheep	458,341	465,777	469,657
Horses	78,202	73,995	71,267
Pigs	3,726	3,862	4,075
Hens	164,400	178,093	160,537

## Meat production and processed milk

Tonnes	1995	2000	2002
Mutton and lamb	8,690	9,735	8,676
Beef	3,061	3,626	3,639
Pork	3,330	4,783	6,011
Poultry	1,952	3,051	4,633
Processed milk, thous. litres	102,864	104,025	110,761

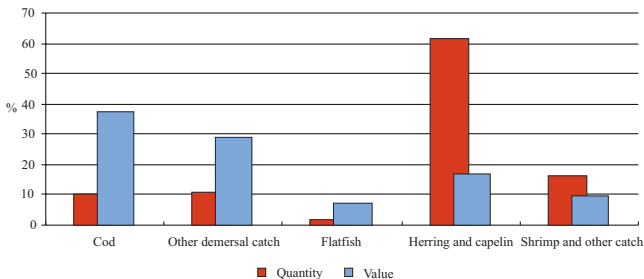
## Annual consumption of meat per capita 1995–2002



## Fish catch by species

	1995	2000	2002
Total catch, tonnes	1,563,118	1,980,163	2,133,327
Demersal fish catch	423,450	464,860	449,792
Cod	168,684	238,324	213,417
Haddock	60,060	41,698	49,951
Saithe	47,466	32,947	41,839
Redfish	118,748	116,297	110,875
Catfish	12,544	15,043	14,304
Other demersal catch	15,948	20,552	19,405
Flatfish	52,738	29,671	35,151
Herring	284,473	287,663	223,843
Capelin	715,551	892,405	1,083,135
Blue whiting	369	259,157	286,381
Shrimp	76,044	33,539	35,671
Other	10,493	12,869	19,354
Total value, million ISK	50,318	60,380	77,075
% of total			
Demersal fish catch	55.7	72.7	65.9
Cod	23.7	42.6	37.2
Flatfish	14.2	7.7	7.7
Herring and capelin	10.7	9.6	16.9
Shrimp	18.3	6.7	5.3
Other	1.1	3.3	4.1

## Quantity and value of fish catch 2002

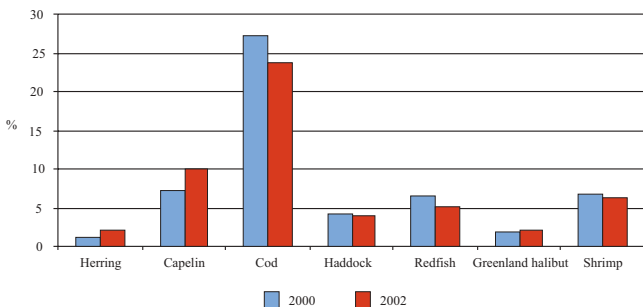


## Fishing and fish processing

### Exports of marine products

	2000	%	2002	%
Exports total, tonnes	1,335,069	100.0	1,441,292	100.0
Marine products	725,501	54.3	804,195	55.8
Fresh fish	110,648	8.3	95,533	6.6
Frozen fish	193,080	14.5	250,430	17.4
Dried and salted fish	74,531	5.6	71,437	5.0
Other marine products	347,242	26.0	386,796	26.8
Total fob-value, million ISK	149,273	100.0	204,303	100.0
Marine products	94,498	63.3	128,592	62.9
Fresh fish	11,344	7.6	14,288	7.0
Frozen fish	50,364	33.7	66,084	32.3
Dried and salted fish	21,402	14.3	25,939	12.7
Other marine products	11,388	7.6	22,280	10.9

### Marine products as percentages of export 2000 and 2002



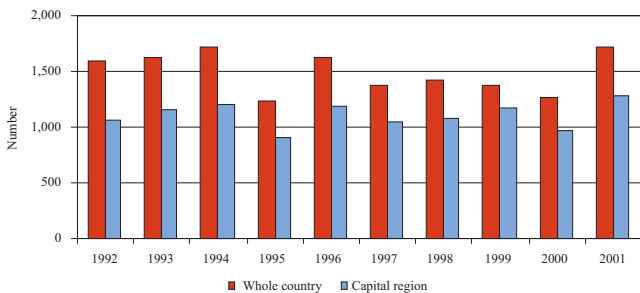
### Production of some manufactured goods

Thous. tonnes	1990	1995	2001
Cement	114.1	81.0	125.2
Aluminium	86.8	100.1	245.1
Diatomite	24.9	28.1	20.2
Ferro-silicon	62.8	70.3	111.9

### Dwellings by number of rooms and type of dwellings

2002	One and two			Other
	Total	family houses	Apartments	
Total	108,577	58,781	48,786	1,010
1 room with kitchen	1,482	411	1,008	63
2 rooms with kitchen	15,014	2,978	11,924	112
3 rooms with kitchen	23,582	6,832	16,608	142
4 rooms with kitchen	24,553	11,916	12,457	180
5+ rooms with kitchen	41,705	35,241	6,151	313
Not stated	2,241	1,403	638	200
Dwellings pr 1,000 inhabitants	376	204	169	4
Percent increase pr year	1.8	1.3	2.5	-6.3

### Completed dwellings 1992–2001



**Gross energy consumption by source**

2002	PJ	%
Gross energy consumption, total	143.4	100.0
Domestic energy	103.0	71.8
Hydro energy	25.1	17.5
Geothermal energy	77.9	54.3
Imported energy	40.4	28.2
Oil	36.1	25.2
Coal	4.3	3.0

Notes: 1,000 tonnes of oil equivalent = 11.63 GWh. PJ petajoule =  $10^{15}$  J equals 23,800 tonnes of oil

**Annual generation of electricity in public power plants**

GWh	1995	2000	2002
Annual generation of electricity	4,977	7,676	8,409
Hydro energy	4,678	6,352	6,972
Geothermal energy	290	1,323	1,433
Oil	8	4	3
kWh per capita	18,583	27,303	29,242

**Gross consumption of electricity**

GWh	Total consumption	Ordinary consumption	Power-intensive industries	Thereof Aluminium plants
1960	536	397	139	–
1970	1,460	705	755	642
1980	3,143	1,445	1,698	1,280
1985	3,837	1,834	2,003	1,287
1990	4,447	2,218	2,229	1,509
1995	4,977	2,480	2,497	1,702
2000	7,676	2,783	4,893	3,767
2002	8,411	2,955	5,456	4,358

### **Passengers through Icelandic airports**

	1995	2000	2002
<b>Keflavik airport</b>			
Passengers, total	930,486	1,455,705	1,219,405
From Iceland	345,066	536,506	485,386
To Iceland	342,921	539,639	493,643
Transit	242,499	379,560	240,376
<b>Other airports</b>			
Passengers, total <sup>1</sup>	766,535	917,129	698,613
Scheduled flights	691,000	860,209	641,771
Non-scheduled flights	73,618	55,631	55,449
Ambulance flights	1,917	1,289	1,393

<sup>1</sup> Passengers are counted both on departure and arrival.

### **Overnight stays in hotels and guesthouses**

	1995	2000	2002
Number of overnight stays	844,070	1,186,455	1,260,501
Foreigners, % of total	70.9	75.4	77.0
From:			
Germany	19.3	12.7	13.0
United Kingdom	6.4	10.6	12.0
U.S.A.	5.1	9.6	9.3
Sweden	6.6	7.0	5.3
Denmark	5.1	5.2	4.9

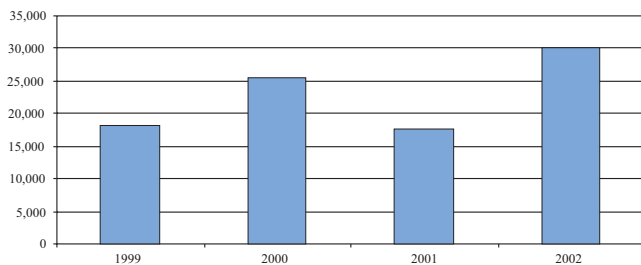
### **Available accommodation in hotels and guesthouses**

Seasons 2002	Total	1–59 beds	≥ 60 beds
<b>Number of establishments</b>			
January–April	154	114	40
May–August	273	202	71
September–December	170	124	46
<b>Number of rooms</b>			
January–April	4,130	1,544	2,586
May–August	6,807	2,699	4,108
September–December	4,650	1,679	2,971

### Passengers from abroad on luxury lines

	1999		2002	
	Number	%	Number	%
Ship arrivals	37		50	
Passengers, total	18,258	100.0	30,077	100.0
Germany	9,020	49.4	12,707	42.2
United States	1,927	10.6	8,509	28.3
United Kingdom	4,323	23.7	5,037	16.7
Canada	560	3.1	690	2.3
Netherlands	140	0.8	576	1.9
Belgium	1,000	5.5	476	1.6
France	680	3.7	329	1.1
Switzerland and Liechtenstein	163	0.9	321	1.1
Austria	195	1.1	253	0.8
Australia	29	0.2	184	0.6
Sweden	8	0.0	90	0.3
Italy	31	0.2	80	0.3
Spain	10	0.1	47	0.2
Norway	3	0.0	12	0.0
Other foreigners	169	0.9	766	2.5

### Passengers from abroad on luxury lines 1999–2002



**Registered vessels**

1 January 2003	Number	Gross tonnages
Vessels, total	1,135	237,728
Stern trawlers	76	80,718
Other fishing vessels	875	108,253
Merchant fleet	42	14,851
Other vessels	142	33,907

**Registered motor vehicles**

31 December	1995	2000	2002
Passenger cars	119,232	158,936	161,721
Buses	1,295	1,673	1,699
Lorries and vans	14,757	19,432	20,278
Motorcycles	1,881	2,278	2,557
Passenger cars per 1,000 inhabitants	445	562	561

**Road traffic accidents**

	1995	2000	2002 <sup>1</sup>
Persons killed or injured	1,655	1,520	1,438
Persons killed	24	32	29
Persons with minor injuries	1,392	1,316	1,289
Persons with major injuries	239	172	120
Per 100,000 inhabitants			
Persons killed or injured	619	541	500
Of whom killed	9.0	11.4	10.1

<sup>1</sup> Preliminary data.

**Post and telecommunications**

	1999	2000	2002
Post offices	86	94	94
Postal deliveries, thous.	93,992	101,659	96,423
Access channels (wired lines)	172,781	196,336	187,999
GSM subscriptions	134,886	187,628	235,338
NMT subscriptions	27,136	27,268	25,100
Per 1,000 population, Access channels	619	693	652
Per 1,000 population, GSM	483	662	817
Per 1,000 population, NMT	97	96	87

### Consumer price index

	Average change from previous year, %		Average change from previous year, %
1985	32.4	1994	1.5
1986	21.3	1995	1.7
1987	18.8	1996	2.3
1988	25.2	1997	1.8
1989	21.1	1998	1.7
1990	14.8	1999	3.4
1991	6.8	2000	5.1
1992	3.7	2001	6.6
1993	4.1	2002	4.8

### Breakdown of household consumption

%	March 2002	March 2003
Total	100.0	100.0
Food and non-alcoholic beverages	16.3	15.2
Alcoholic beverages and tobacco	4.3	4.7
Clothing and footwear	5.6	5.3
Housing, water, electricity, gas and other fuels	18.3	20.3
Furnishing and household equipment	6.8	6.1
Health	3.7	3.8
Transport	15.8	15.6
Communications	3.0	3.1
Recreation and culture	14.2	13.9
Educational services	0.4	0.8
Hotels, cafés and restaurants	5.5	5.1
Other goods and services	6.1	6.1

### Income from employment according to tax returns

Average income, thous. ISK	1997	2000	2002
Total	1,486	1,968	2,330
Married males	2,559	3,290	3,820
Married females	1,103	1,526	1,926
Couples, married or cohabiting	3,374	4,462	5,322
Single persons	1,091	1,491	1,716
Males, total	1,961	2,546	2,935
Females, total	1,025	1,407	1,732

## Consumption

### Consumption of some food articles

Kilos	1995	2000	2002 <sup>1</sup>
Butter	5.9	4.9	4.5
Meat	68.2	77.7	79.9
Potatoes	47.0	39.2	36.0
Coffee	6.9	7.4	7.8
Sugar	54.6	51.2	51.7
Fish	46.7	46.9	46.0
Milk, litres	194.9	183.4	179.1
Soft drinks, litres	125.7	160.2	174.9

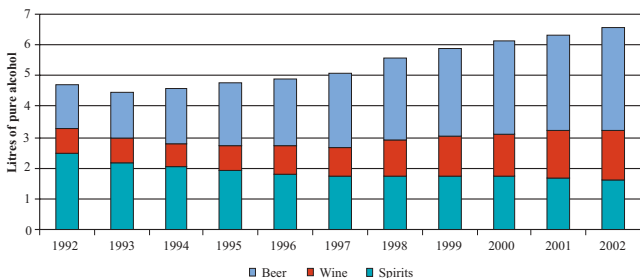
<sup>1</sup> Preliminary data.

### Consumption of alcoholic beverages per inhabitant 15 years and over

Litres	1995	2000	2002
Beer	40.48	60.51	65.81
Wine	6.79	11.67	14.27
Spirits	4.98	4.54	4.11
Consumption of pure alcohol	4.76	6.14	6.53

### Consumption of alcoholic beverages 1992–2002

Litres of pure alcohol per inhabitant 15 years and over



## Economic growth

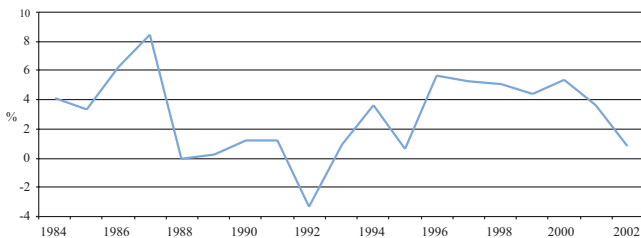
Volume changes, %	Average growth of GDP	Average population increase	Per capita annual growth of GDP
1955–1965	5.0	2.0	2.9
1965–1975	4.0	1.3	2.7
1975–1980	6.1	0.9	5.1
1980–1985	1.9	1.1	0.7
1985–1990	3.1	1.1	2.0
1990–1995	0.5	1.0	-0.5
1995–2000	5.1	1.0	4.1
2002	0.8	1.2	-0.4
1955–2002	4.0	1.3	2.6

## Gross domestic product and gross national product

Current prices, million ISK	1997	2000	2002 <sup>1</sup>
National expenditure, total	510,518	709,438	763,644
Private final consumption exp.	293,221	389,574	418,269
Government final cons. exp.	112,776	157,934	198,777
Gross fixed capital formation	104,419	159,436	146,780
Increase in stocks	102	2,494	-182
Export of goods and services	190,948	231,632	308,976
Less: Import of goods and services	187,717	278,637	293,660
Gross domestic production	513,749	662,433	778,960
Net factor income from the rest of the world	-12,116	-19,353	-16,997
Gross national product	501,633	643,080	761,963

<sup>1</sup> Preliminary data.

## Economic growth 1984–2002



## National accounts

### Gross domestic factor income by industries

%	1997	2000 <sup>1</sup>	2002 <sup>1</sup>
Agriculture	1.8	1.6	1.5
Fishing and fish processing	12.3	10.5	12.4
Aluminium and ferro-silicon processing	1.3	1.4	1.3
Manufacturing, other	10.0	9.2	8.5
Electricity and water supply	3.8	3.4	3.5
Construction	7.8	9.4	7.8
Wholesale and retail trade, restaur. & hotels	13.8	14.6	13.5
Transport, storage and communication	7.9	7.9	7.5
Other private services	22.4	22.2	22.9
Producers of government services	18.9	19.9	21.1
Total industries	100.0	100.0	100.0
Less: Imputed bank service charges	-4.8	-4.5	-4.6
Total	95.2	95.5	95.4
GDP at market prices	113.6	115.2	114.0

<sup>1</sup> Estimated data.

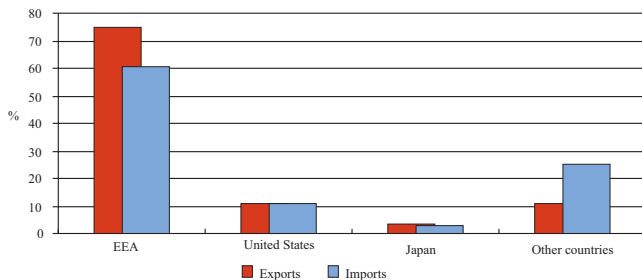
### Balance on current account

Million ISK	1997	2000	2002
Merchandise exports, fob	131,213	149,272	204,303
Merchandise imports, fob	130,959	186,752	190,674
Balance of goods	254	-37,480	13,629
Service receipts	59,735	82,360	104,673
Service expenditures	56,758	91,885	102,986
Balance of services	2,977	-9,525	1,687
Balance of goods and services	3,231	-47,005	15,316
Interest and other factor income	-11,892	-20,197	-17,551
Current transfers, net	-238	-762	1,170
Balance on current account	-8,899	-67,120	-363
Percentage of GDP			
Balance on current account	-1.7	-10.1	0.0

## Foreign trade by market area

2002	Exports fob		Imports cif	
	million ISK	%	million ISK	%
Total	204,303	100.0	207,608	100.0
EEA	153,462	75.1	125,599	60.5
Austria	224	0.1	1,123	0.5
Belgium	3,210	1.6	3,684	1.8
Denmark	9,417	4.6	17,654	8.5
Finland	1,867	0.9	3,478	1.7
France	7,501	3.7	6,436	3.1
Germany	37,748	18.5	22,165	10.7
Greece	1,475	0.7	126	0.1
Ireland	329	0.2	2,836	1.4
Italy	2,763	1.4	6,207	3.0
Lichtenstein	–	–	8	0.0
Luxembourg	64	0.0	157	0.1
Netherlands	22,059	10.8	12,505	6.0
Norway	9,333	4.6	16,601	8.0
Portugal	8,865	4.3	1,012	0.5
Spain	10,694	5.2	3,853	1.9
Sweden	2,174	1.1	12,294	5.9
United Kingdom	35,739	17.5	15,460	7.4
Other European countries	10,613	5.2	23,856	11.5
United States	21,989	10.8	23,025	11.1
Japan	6,766	3.3	6,514	3.1
Other countries	11,473	5.6	28,614	13.8

## Foreign trade by market area 2002



## External trade

### Exports (fob) by origin

%	1981–1985	1991–1995	2002
Marine products	72.6	77.1	62.9
Agricultural products	1.5	1.8	1.6
Manufacturing products	24.2	18.4	32.8
Other	1.7	2.7	2.6

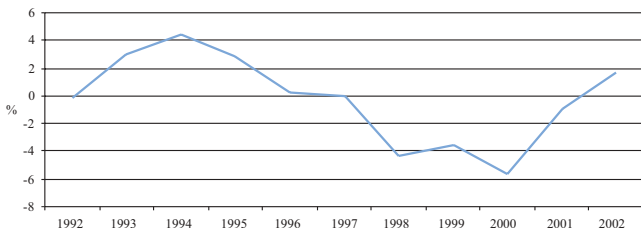
### Imports (cif) by broad economic categories

%	1995	2000	2002
Food and beverages	10.3	8.3	10.1
Industrial supplies	28.7	24.0	29.0
Fuels and lubricants	7.1	9.1	8.3
Capital goods (except transp. equipm.)	20.6	23.1	19.7
Transport equipment	12.2	16.6	13.2
Consumer goods	21.1	18.9	19.7

### Balance of trade

Million ISK	Exports fob	Imports fob	Balance of trade	% of GDP
1992	87,833	88,224	-391	-0.1
1995	116,607	103,539	13,068	2.9
2000	149,273	187,276	-38,003	-5.7
2002	204,303	191,205	13,098	1.7

### Balance of trade as a percentage of GDP 1992–2002



**Public sector finances**

Million ISK	1995	2000	2001
1. Current revenue	163,562	275,740	300,466
% of current revenue			
Tax revenue	92.4	94.2	92.9
Taxes on income and wealth	41.6	46.7	49.7
Taxes on production and imports	50.8	47.5	43.2
Interest	4.2	3.7	4.9
Miscellaneous	3.4	2.1	2.3
2. Current expenditure	163,828	238,516	271,843
% of current expenditure			
Public consumption	60.4	66.2	65.0
Interest expenditure	12.2	9.5	10.5
Transfers	27.4	24.3	24.5
3. Saving, net	-267	37,224	28,623
4. Capital balance	13,130	20,670	27,351
5. Net lending/borrowing	-13,396	16,554	1,272
Percentage of GDP			
Total revenue	36.2	41.6	40.3
Tax revenue	33.4	39.2	37.4
Taxes on income and wealth	15.0	19.4	20.0
Taxes on production and imports	18.4	19.8	17.4
Other revenue	2.7	2.4	2.9
Total expenditure	39.1	39.1	40.2
Public consumption	21.9	23.8	23.7
Interest	4.4	3.4	3.8
Transfers	9.9	8.8	8.9
Capital balance	2.9	3.1	3.7

**Public sector expenditure by function**

% of GDP	1995	2000	2001
Total expenditure	41.3	41.2	42.1
General administration	3.3	3.7	3.7
Social affairs	24.2	25.5	25.6
Education	4.9	5.9	6.2
Health	6.9	7.7	7.7
Social security and welfare	9.0	8.3	8.2
Housing, planning and sanitary affairs	1.0	0.9	1.0
Cultural affairs	2.3	2.7	2.6
Industries	6.3	6.0	6.3
Interest	4.4	3.4	3.8

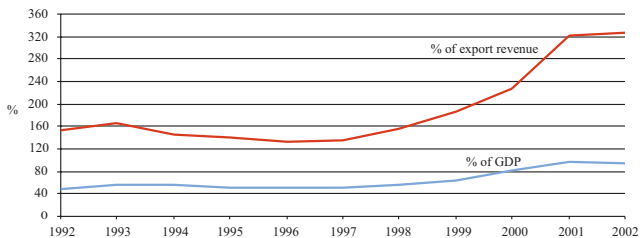
## Summary of the accounts of the banking system

Position at year end, million ISK	1997	2000	2002
Foreign assets, net	-24,149	-187,826	-220,151
Foreign assets, short-term, net	46,766	39,194	73,056
Foreign liabilities unacc. for elsewhere	-70,915	-227,020	-293,207
Total lending	288,535	668,423	864,467
Money supply (M4)	239,743	463,251	604,622
M1 (notes, coins plus demand deposits)	48,357	72,523	89,660
M2 (M1 + gen. savings deposits.)	116,655	131,648	161,656
M3 (M2 + time deposits)	199,335	298,536	397,109

## Long-term foreign debt

Position at year end, million ISK	1997	2000	2002
Long-term foreign debt, total	264,334	588,234	672,565
General government	123,255	131,271	189,828
Financial institutions	75,560	319,925	324,241
Industries	65,519	137,038	158,496
Total debt as percentage of			
GDP	50.2	82.9	95.2
Export revenue	134.2	227.6	327.2
Debt service burden as			
percentage of export revenue	19.1	36.3	48.2
Amortization	12.0	26.4	40.3
Interest	7.1	10.0	7.9

## Long-term foreign debt as percentage of GDP and export revenue 1992–2002



## Deposits and lending of deposit money banks

Position at year end	1997	2000	2002 <sup>1</sup>
Total deposits, million ISK	193,584	291,384	389,443
Percent distribution			
National Bank	33.1	28.2	27.4
Íslandsbanki	22.3	23.1	21.7
Agricultural Bank	20.9	23.1	22.3
Kaupthing	•	•	2.0
Savings banks	22.3	24.8	26.0
Others	1.5	0.8	0.4
Total lending, million ISK			
Percent distribution	290,990	692,026	917,544
National Bank	35.6	28.2	24.6
Íslandsbanki	21.2	34.6	28.4
Agricultural Bank	19.9	17.7	19.9
Kaupthing	•	•	9.9
Savings banks	22.5	19.3	17.6
Others	0.9	0.3	0.2
Less interbank credit	-0.1	-0.2	-0.5

<sup>1</sup> Preliminary data.

## Payment intermediation

	1997	2000	2002
Turnover in million ISK	968,180	961,601	860,557
Cheques	707,838	551,460	388,212
Credit cards	82,408	123,595	139,183
Domestically	70,410	104,522	122,933
Abroad	11,998	19,072	16,252
Debit cards	177,934	286,546	333,162
Domestically	176,605	283,062	328,516
Abroad	1,333	3,483	4,648
Number of transactions in thous.	52,626	74,851	78,075
Cheques	8,480	4,548	2,726
Credit cards	21,775	31,289	30,687
Domestically	20,262	29,086	28,973
Abroad	1,513	2,204	1,714
Debit cards	22,371	39,014	44,662
Domestically	22,213	38,635	44,152
Abroad	158	376	511
Number of credit cards at end of period	161,574	192,492	202,970
Number of debit cards at end of period	207,358	298,646	331,141

**Social protection expenditure**

2001	Million ISK	%
Total expenditure	149,805	100.0
Families and children	19,144	12.8
Unemployment insurance and unemployment agencies	2,186	1.5
Health insurance	56,767	37.9
Old age	40,804	27.2
Disability	20,069	13.4
Survivors	4,263	2.8
Housing	1,019	0.7
Other social benefits	3,168	2.1
Administration costs	2,385	1.6

**Health professionals and hospitals**

Number	1995	2000	2002
Physicians and surgeons	809	968	1,029
Nurses	2,035	2,237	2,342
Dentists	270	283	...
Per 1,000 population			
Physicians and surgeons	3.0	3.4	3.6
Nurses	7.6	8.0	8.1
Dentists	1.0	1.0	...

**Recipients of social security benefits**

Type of benefits 2002	Total	Males	Females
Retirement pension	26,054	11,209	14,845
Disability pension	10,443	4,068	6,375
Income supplement	21,877	9,332	12,545
Income supplement for disability pensioners	9,647	3,824	5,823
Disability allowance	6,342	2,542	3,890
Child pension	756	215	541
Maternity/paternity benefits	4,434	901	3,533

### Pupils/students by education level

2002	Number of pupils
Compulsory education, 1st–7th grade (age 6–12 years)	31,470
Thereof 6 year-olds	4,341
Compulsory education, 8th–10th grade (age 13–15 years)	13,225
Secondary education	21,379
Higher education	13,884
Studying abroad (Applicants to the Students Loan Fund)	1,866

### Children in daycare institutions

% of age groups	1995	2000	2002
Children in daycare institutions, total			
0–5 years	53.4	56.4	65.3
0–2 years	22.7	21.6	36.7
3–5 years	83.1	90.9	93.2
In pre-primary institutions 4–6 hours			
0–5 years	37.4	25.9	21.0
0–2 years	14.6	10.5	12.3
3–5 years	60.3	41.3	29.4
In pre-primary institutions 7–9 hours			
0–5 years	16.0	30.6	44.4
0–2 years	8.1	11.2	24.4
3–5 years	21.5	49.6	63.7

### Books, newspapers and periodicals

	1995	2000	2001
Books published, total	1,601	1,869	...
Books	1,046	1,137	...
Booklets	555	732	...
Thereof literary works	427	410	...
Periodicals, total	958	1,004	1,087
General-interest newspapers, total	118	59	60
Dailies	5	3	3
Non-dailies	113	56	57

**Radio and television**

	1995	2000	2002
Radio programme services	18	26	27
Broadcasting time in hours <sup>1</sup>	88,547	148,564	151,092
Terrestrial television stations	6	9	8
Broadcasting time in hours <sup>1</sup>	16,995	49,880	50,231
Percentage of households equipped with: <sup>2</sup>			
Television	97.4	...	...
Radio	99.2	...	...
Video	79.3	...	...

<sup>1</sup> Preliminary data.

<sup>2</sup> Household Budget Survey

**Cinemas in Capital region**

	1995	2000	2002
Cinemas	6	7	9
Cinema halls	23	26	32
Seat capacity	5,841	6,210	7,256
Showings per week	665	...	...
Attendance (in thous.)	1,209	1,390	1,439
Attendance per capita	7.6	7.9	8.0
Premiers of feature films	189	164	177
Icelandic	7	6	9

**Professional theatres**

	1990/1991	1999/2000	2001/2002
Theatres, total	4	9	8
Stages	6	12	15
Works performed	26	98	69
Plays	14	70	56
Performances	798	1,516	1,266
Audience	193,935	271,403	213,840

## Elections

### Results of elections to the Althingi

Elections 10 May 2003	Valid votes	%	Members elected
Total	183,172	100.0	63
Independence Party	61,701	33.7	22
The Alliance	56,700	31.0	20
Progressive Party	32,484	17.7	12
The Left-Green Movement	16,129	8.8	5
The Liberal Party	13,523	7.4	4
Others and outside parties	2,635	1.4	–

### Elected members to the Althingi

Elections 10 May 2003	Total	Males	Females
Elected members, total	63	44	19
Constituencies			
Reykjavíkurborg	11	7	4
Reykjavíkurborg norður	11	8	3
Suðvesturkjördæmi	11	5	6
Norðausturkjördæmi	10	7	3
Norðvesturkjördæmi	10	9	1
Suðurkjördæmi	10	8	2

### Results of presidential elections

Elections 29 June 1996	Valid votes	%
Total	165,233	100.0
Ástþór Magnússon Wium	4,422	2.7
Guðrún Agnarsdóttir	43,578	26.4
Ólafur Ragnar Grímsson	68,370	41.4
Pétur Kr. Hafstein	48,863	29.5

## European Economic Area

	Total area 1,000 km <sup>2</sup>	Population mid year 2001 in thous.	Population under 15 years of age as % of total <sup>1</sup>	Average expected lifetime <sup>2</sup>	
				Males	Females
EEA, total	3,667	382,655	...	...	...
Iceland	103	288	23.2	78.2	82.2
Liechtenstein	0	34	18.5	68.0	75.0
Norway	324	4,524	20.0	76.2	81.5
EU	3,242	377,809	...	...	...
Austria	84	8,139	16.4	75.9	81.7
Belgium	31	10,263	17.6	74.6	80.8
Denmark	43	5,368	18.7	74.7	79.3
Finland	338	5,195	17.9	74.6	81.5
France	552	59,344	18.7	75.0	82.5
Germany	357	82,431	15.5	75.0	81.0
Greece	132	10,565	15.2	75.5	80.6
Ireland	70	3,881	21.5	74.6	79.6
Italy	301	56,306	14.4	75.7	81.8
Luxembourg	3	444	18.8	75.3	80.8
Netherlands	42	16,105	18.6	75.8	80.7
Portugal	92	10,336	16.0	73.6	80.3
Spain	506	40,409	14.6	75.7	82.5
Sweden	450	8,909	18.2	77.6	82.1
United Kingdom	243	60,114	18.9	75.5	80.2

<sup>1</sup> 1 January 2000.

<sup>2</sup> Figures are for 1999 or 2000.

Source: Council of Europe.

## European Economic Area (cont.)

	Growth of GDP 2001 <sup>1</sup>	Unemploy- ment, % 2000–2001	Inflation, % 2002 <sup>2</sup>	Number of passenger cars per 1,000 inhab. 2001
EEA	...	...	...	...
Iceland	-0.6	1.3	4.6	561
Liechtenstein	...	...	...	646
Norway	1.0	3.6	1.3	414
EU	1.1	...	2.1	...
Austria	1.0	3.6	1.7	504
Belgium	0.7	7.0	1.6	462
Denmark	0.2	5.2	2.4	350
Finland	1.6	9.1	2.0	416
France	1.2	8.8	1.9	483
Germany	0.2	7.9	1.3	534
Greece	4.0	10.2	3.9	253
Ireland	6.0	3.7	4.7	361
Italy	0.4	9.5	2.6	557
Luxembourg	1.1	2.7	...	635
Netherlands	0.2	2.7	3.9	408
Portugal	0.5	4.1	3.7	481
Spain	2.0	10.5	3.6	437
Sweden	1.9	4.0	2.0	455
United Kingdom	1.8	4.8	1.3	422

<sup>1</sup> Preliminary data<sup>2</sup> Harmonized indices of consumer prices (HICP).